

Installing User Fonts on v8.xx

If you downloaded a Sierra Font that was not created by Sierra, follow these steps to install it on your v8 software:

FINDING THE SIERRA FONTS FOLDER

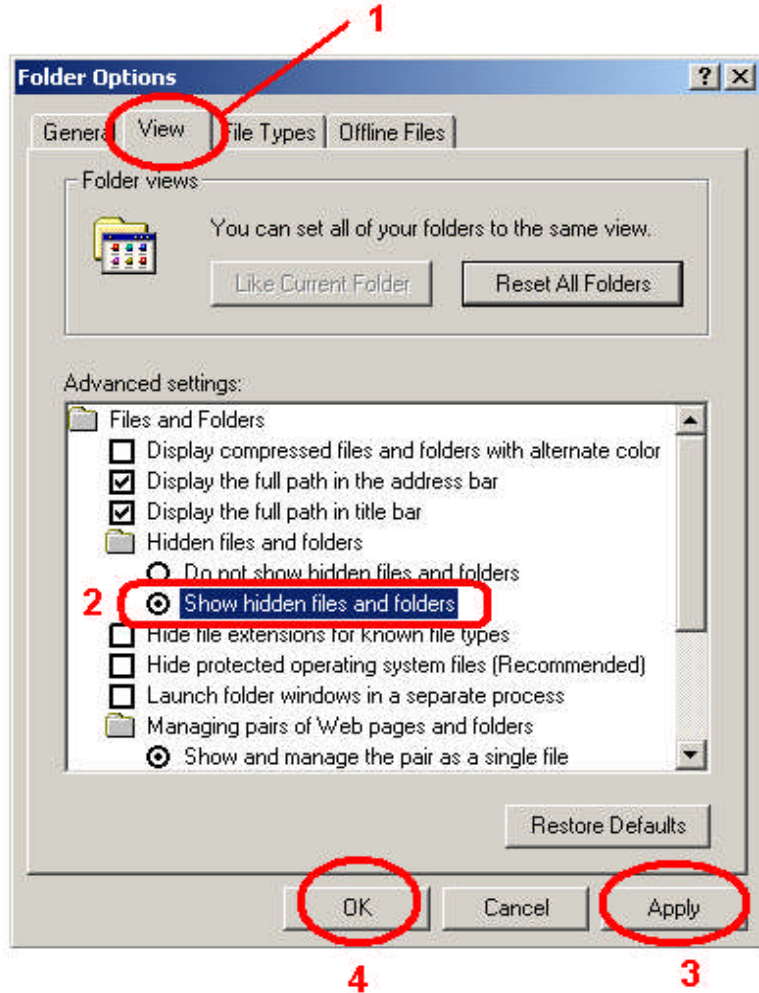
Go to your Windows Control Panel, usually found on the Windows Start menu.

Once there, click on the *Appearance and Themes* category, and then click on the Folder Options icon.

When the Folder Options window appears, follow these 4 steps (see figure on the right):

1. Click on the View tab.
2. Next, locate the *Hidden Files and Folders* section on the list, and select the item called **Show hidden files and folders**.
3. Click *Apply* to accept the changes.
4. Click *OK* to exit. Close the Control Panel window as well.

Note: *the process above is to make visible in Windows the folder where the Sierra Fonts are stored. Without access to this folder, it is very difficult to copy the downloaded Fonts to the proper folder, where the Sierra software can find them and use them.*



SAVING THE FONT FILES

Now that you made visible the folder where the Sierra Fonts are stored, you can save the actual Font files to that folder.

To do this, use My Computer or Windows Explorer to save the Font files you downloaded to the following folder:

C:\Documents and Settings\All Users\Application Data\Sierra\EoDesign\Resources
(if this a revised version of an existing Font, overwrite when prompted)