

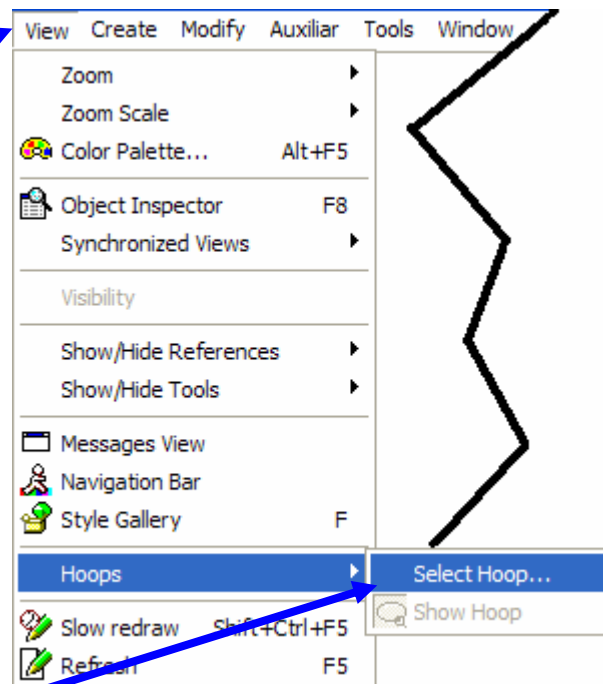
## Working with Hoops

Hoops of different shapes and sizes can now be viewed on the design area with a few simple mouse clicks. You can also create your own hoop sizes. Let's walk through the process of selecting a hoop to view on screen and create a new hoop.

**1** To get to the Hoops menu, click View on the Toolbar.

**2** Click Hoops

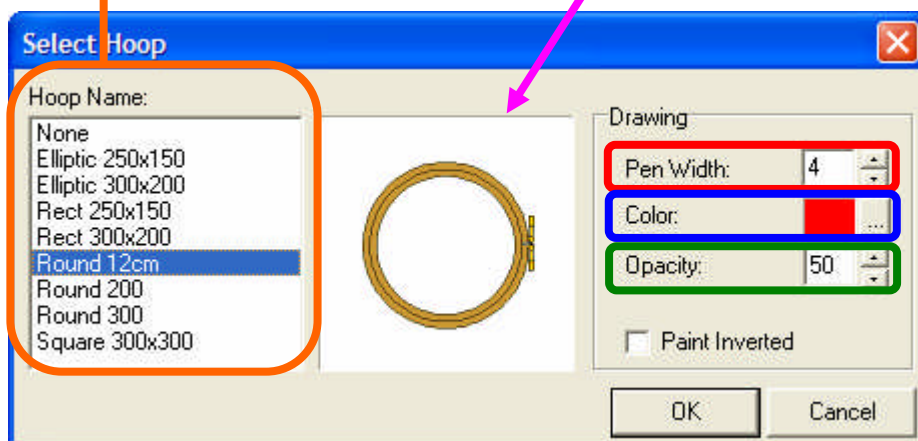
**3** Then click Select Hoop...



The following screen will appear on the grid area. You have control over hoop color and hoop selection that you wish to be displayed. Outlined are the areas and their function.

The **Hoop Name** and its corresponding size appear in the window. New hoops that are created will appear here as well. Click the size hoop needed for your project.

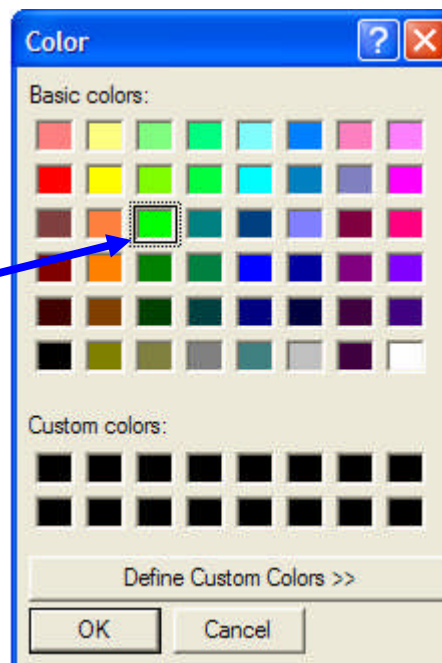
**Selected Hoop View**  
This window previews the selected hoop.



**Pen Width** – This is the thickness of the outer rim of the hoop that is selected and displayed on the screen. A good Pen Width is approximately 8 to 9. It will give the hoop a good width and show well on the design screen. Use the Up and Down Arrows to make the Pen Width wider or more narrow. There is always the option to highlight the number then enter a new number in the box manually.

**Color** – This feature allows you to customize the color of the hoop. Even though the hoop is shown as wood grain in the illustration, when it actually appears on the screen, it will be the color you select. Click the box with three dots beside the current color and the Color Box will appear. Click the color desired and it will replace the current color in the box on the main screen.

New Color Selected

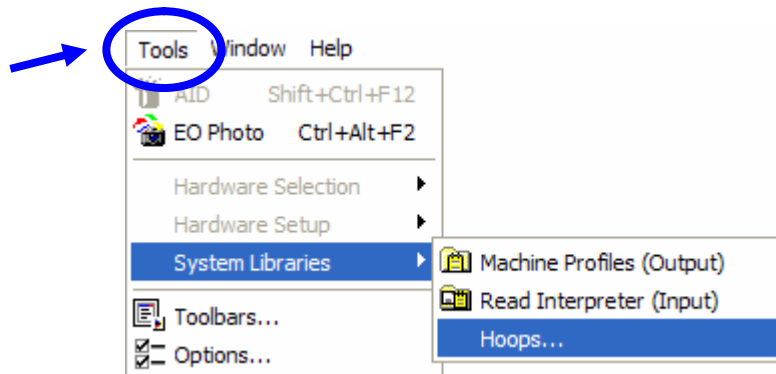


**Opacity** – This is the transparency of the work area surrounding the outer perimeter of the hoop. 50% is the default setting and can be adjusted for an amount from 0 to 100, where 0% shows the work area as it normally appears and 100% means the surrounding area is completely black.

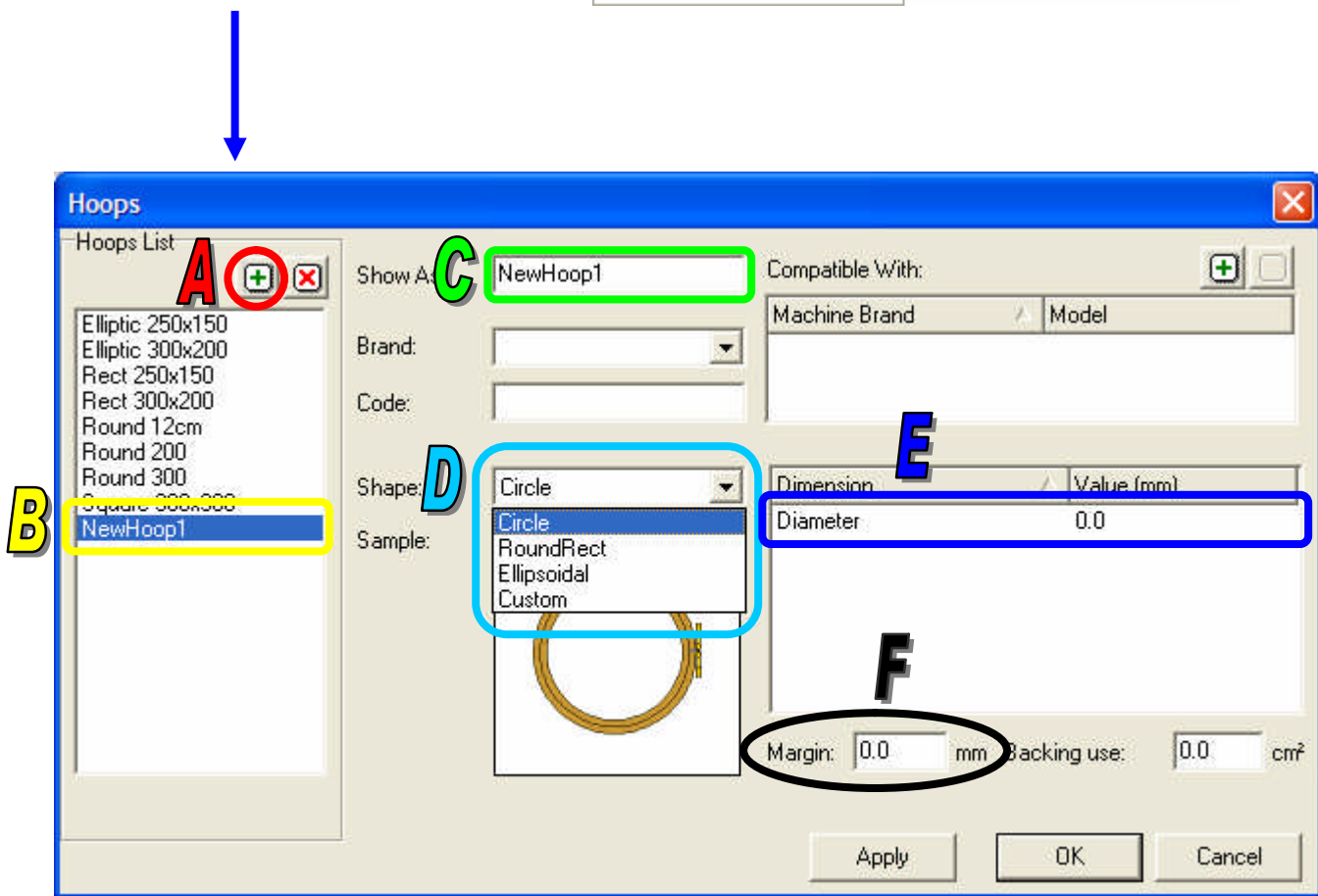
### Creating Hoops

You have the option of customizing existing hoops or creating your own. This is an advantage as you will be able to add hoops to the Hoops menu that can be used for other designs.

To access the option to create hoops, click Tools→System Libraries→Hoops.



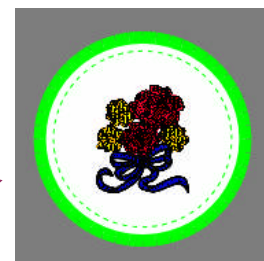
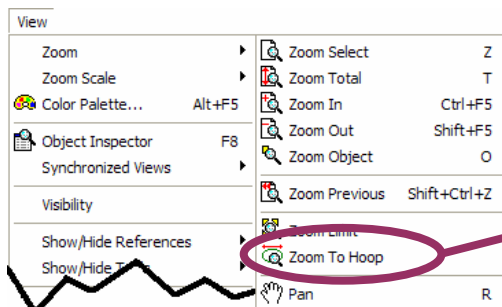
The screen below will open with several sections in which to create new hoops.



- A. Click the “+” to add a new hoop to the list.
  - B. “NewHoop1” will appear on the list.
  - C. Click on the “NewHoop1” just added, and type a new hoop name if needed.
  - D. Click the down arrow beside “Circle” to select the type of hoop desired.
  - E. Highlight the 0.0 value in the Diameter line and enter your hoop size.
  - F. Margin is will give you a “safety margin” (in mm) for sewing close to the hoop edge. Usually this is about ¼” (or 6 mm), so that you don’t hit a hoop when sewing.
- Once finished, click OK and the new hoop just created will appear in the “Hoops” menu.

DID YOU KNOW? (I)

To maximize the hoop on the design screen, click View→Zoom→Zoom To Hoop. You can then see how your design looks inside the hoop, which should help you determine the hoop size you need, and to visualize how close to the edge your file will sew.



DID YOU KNOW? (II)

If you created a Hoop on one computer, and you would like to have that hoop transferred to another computer where you also use the software, you can just copy the Hoop file itself to the new computer.

Hoops you create are saved by the software as HPS files in the following folder:  
**C:\Program Files\Common Files\Sierra\Hoops**

**SIERRA SAYS...**

Use the Hoops function to create custom hoops or edit existing ones.

Try different colors for your hoops and different outline thicknesses as well to customize the hoop for your design.