

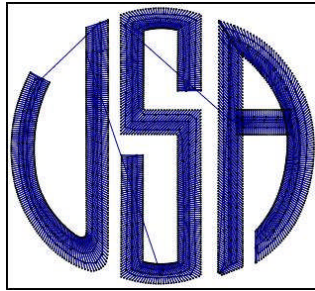


Tech Talk

Connected Monograms

To ensure that your Monograms always connect at the optimal point, make sure you enable the *Connected* setting.

Setup your Monogramming text. When the text comes up on the screen, click off the box (or just hit Enter) to generate stitches. If the letters are not connected, they may look something like this:



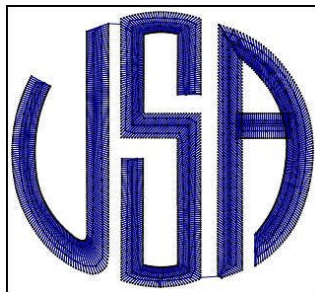
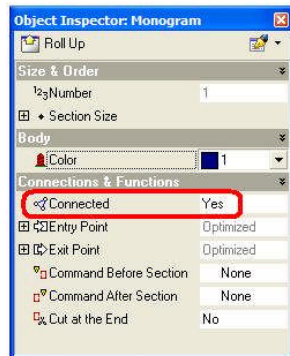
If it wasn't already on, turn on your Object Inspector. Then click on Edit Objects icon.



Your Monogram will automatically be highlighted.

Locate the *Connected* setting in the Object Inspector, set it to "yes".

Your Monogram is now connected at closest point between letters.



EVENTS

We will be at 2 shows in January!
Embroidery Mart West (Las Vegas)
Long Beach ISS (Long Beach)
Details soon at MySierraSoftware.com

Online Trainings for v8 users

Prices effective 1/1/08

Cost per training	HS	1-1	STD
Edit I	4	\$ 165	\$ 83
Edit II	8	\$ 330	\$ 166
Design Maxx	12	\$ 495	\$ 249
Design Maxx Pro	16	\$ 660	\$ 332
Design Maxx Expert	20	\$ 825	\$ 415

HS: length of course in hours (sessions are 2-4 hs)
1-1: one-on-one class (trainer + student)
STD: standard class (trainer + 2-3 students)

Requirements:

- Fast Internet connection (sorry, NO DIAL UP)
- One (1) long-distance call per session

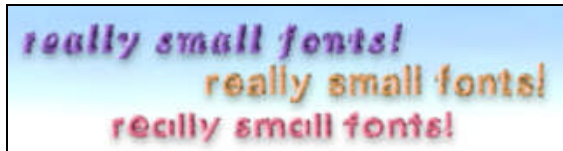
Schedule now at Service@MySierraSoftware.com

OFFER OF THE MONTH (exp 12/31/07)

Last chance at the Service Center to get previous Month Offers at excellent prices!



20 high-quality, scalable, customizable Monograms!



5 Mini Fonts, for crisp 1/4" lettering!



120 scalable, editable Motifs!



10 customizable Models for 3D Space!



15 scalable Fonts for general lettering!



*Tis the season with this Christmas Pack, including 5 Fonts, 5 Monograms, 20 Motifs and 10 Programmable Stitches!